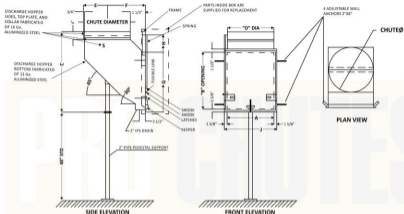


TYPE "H" DISCHARGE DOOR



SIZE	A	B	C	D	E	F	G	H	J
12x24	12 5/8"	24 1/8"	34 3/4"	12"	6 3/4"	14"	27 3/8"	5"	15 1/8"
15x24	15 5/8"	24 1/8"	34 3/4"	15"	8 3/4"	15 1/2"	27 3/8"	5"	18 1/8"
18x30	18 5/8"	30 1/8"	40 3/4"	18"	9 3/4"	17"	33 3/8"	8"	21 3/8"
20x30	20 5/8"	30 1/8"	40 3/4"	20"	10 3/4"	18"	33 3/8"	9"	23 3/8"
24x30	24 5/8"	30 1/8"	40 3/4"	24"	12 3/4"	20"	33 3/8"	11"	27 3/8"
28x34	28 5/8"	34 1/8"	44 3/4"	28"	14 3/4"	22"	36 3/8"	9"	31 3/8"
28x36	28 5/8"	36 1/8"	46 3/4"	28"	14 3/4"	22"	38 3/8"	9"	31 3/8"
30x38	30 5/8"	38 1/8"	50 3/4"	30"	15 3/4"	23"	41 3/8"	10"	33 3/8"
36x48	36 5/8"	48 1/8"	58 3/4"	36"	18 3/4"	26"	51 3/8"	10"	39 3/8"

(3) REQD

COUNTERBALANCE ON BOTH SIDES OF DOOR

THROAT

SIZE AND QUANTITIES REQUIRED